

FEATURE HIGHLIGHTS

High efficiency and reliability

- CE Certified as per standard EN ISO12100-1:2003 EN ISO12100-2:2003, EN60204-1:2006+A1 2009
- Meeting essential requirements of European directives Low Voltage directive 2006/95/EC machine directive 2006/42/EC
- A totally self contained unit
- Rotor media has high performance metal silicates synthesized in situ
- Rotor incorporates robust internal structure with stainless steel perimeter flange for industrial quality, durability and easy serviceability
- Rotor perimeter flange extends media and seal life
- Edge hard face coating on rotor ensures long life and good sealing for media and seals
- Rotor is non-flammable with organics < 2%
- CNC fabricated unit(s) with powder coated finish
- Process and reactivation air flow sectors are insulated

Necessary control and safety

- Differential air pressure switch for providing react air flow
- Reactivation cool down safety device
- Electrical interlocking of fan motors, heaters and rotor drive
- Unique PTFE bonded bulb seal design; minimized air leakage

Options

- Humidity control through humidistat on/off
- Stainless steel construction
- Micro processor controller

Easy to install

- Several mounting and installation options
- Small footprints; low volume/weight per CMH

Easy to operate

- Suitable for continuous operation
- Auto / manual selector switch
- Power on, heater on and fault status indications
- Independent blower and motor for each airflow (Process & Reactivation)
- Volume control damper for both (Process & Reactivation) air flow

Easy to maintain

- Quick and easy to service
- Rotor is water washable



CE certified

HIGH PERFORMANCE, EFFICIENT AND ROBUST
 WITH **ECO-DRY** METAL SILICATE DESICCANT ROTOR

COMPACT DEHUMIDIFIER - FFB SERIES SPECIFICATION

MODEL	PROCESS AIR FLOW CMH	PROCESS ESP (Pa.)	PROCESS MOTOR KW	REACT. AIR FLOW CMH	REACT. ESP (pa.)	REACT. MOTOR (KW)	REACT. HEATER (KW)	POWER REQD. (v/Ø/Hz.)	NOISE LEVEL AT 3 METRE dB(A)	APPROX. WEIGHT kg.
FFB 170	170	120	0.1	57	100	0.1	2.3	230 /1/ 50	70	66
FFB 300	300	200	0.1	100	100	0.1	3.6	230 /1/ 50	70	74
FFB 600	600	200	0.37	200	150	0.37	7.2	415 /3/ 50	70	109
FFB 1000	1000	200	0.75	333	150	0.75	12	415 /3/ 50	70	147
FFB 1500	1500	250	1.5	500	150	0.75	18	415 /3/ 50	70	191
FFB 2000	2000	250	1.5	667	150	0.75	24	415 /3/ 50	70	202
FFB 3000	3000	250	2.2	1000	150	1.1	31.5	415 /3/ 50	80**	235

* Process Inlet size 500 X 210 for FEB-3000 only ** Sound Decibels for FEB-3000 will be 80 dB with Sound Attenuation

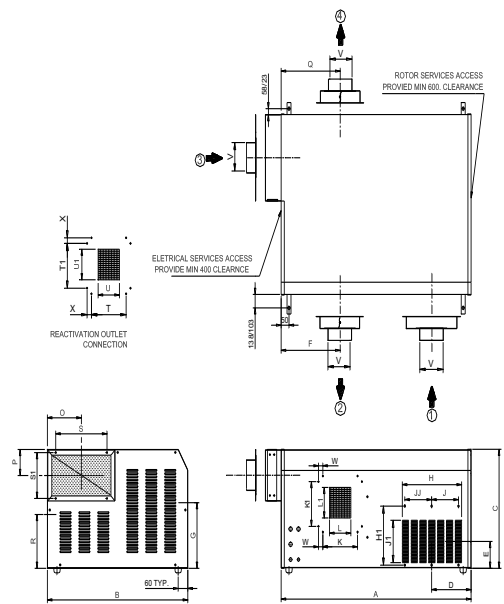
Bry-Air® FFB series

Compact Dehumidifier

Technical Data Sheet

DIMENSIONAL DATA & DUCT CONNECTION (mm)

1. Process Air Inlet
2. Process Air Outlet
3. Reactivation Air Inlet
4. Reactivation Air Outlet

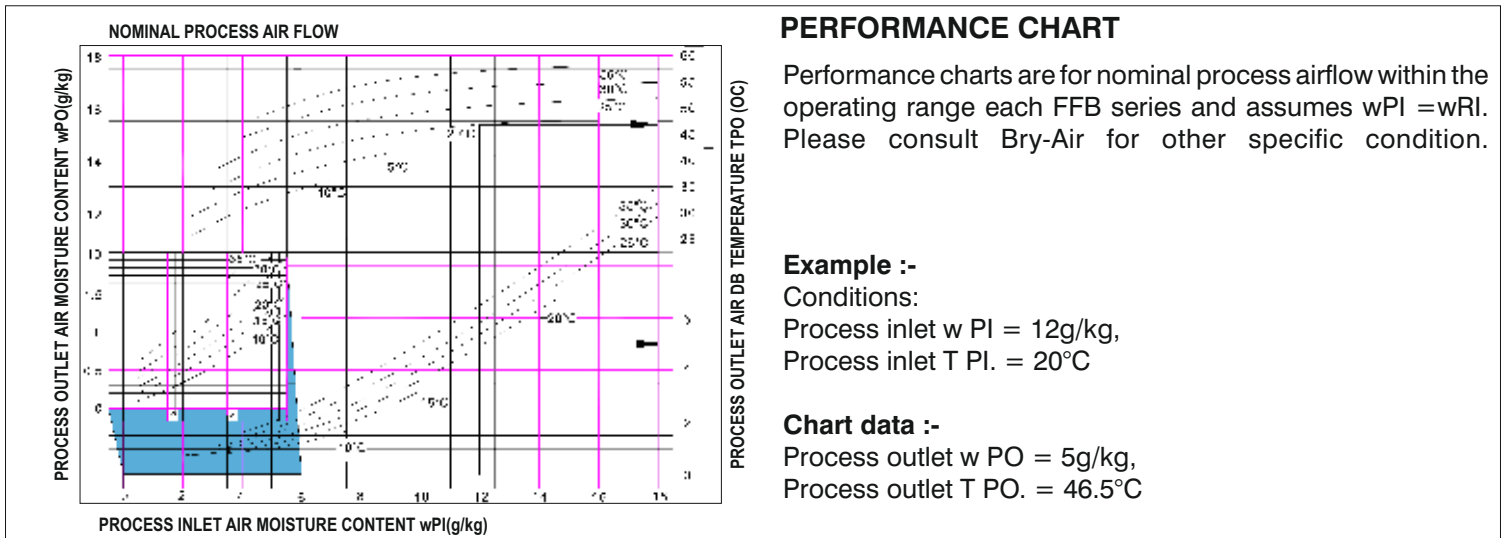


* Process Inlet size 500 x 210 for FFB-3000 only.

MODEL	UNIT DIMENSION DATA (mm)			PROCESS DUCT CONNECTION (mm)														REACTIVATION DUCT CONNECTION (mm)										DIA. HOSE		
				INLET CONNECTION							OUTLET CONNECTION							INLET CONNECTION					OUTLET CONNECTION							
	A	B	C	D	E	H	H1	J	JJ	J1	F	G	K	K1	L	L1	w	O	P	S	S1	Q	R	T	T1	U	U1	x	øV	
FFB-170	680	480	394	140	110	152	190	112	0	124	224	220	120	175	77	93	0	110	85	118	143	224	178	120	175	77	93	0	96	96
FFB-300	740	540	445	170	110	208	190	170	0	124	237	265	120	175	95	93	0	110	85	118	143	237	170	120	175	95	93	0	96	96
FFB-600	890	630	494	196	136	264	240	226	0	160	300	273	170	225	98	128	0	142	85	182	145	300	220	170	225	98	128	0	146	146
FFB-1000	1048	730	555	225	160	320	290	280	0	208	365	290	220	220	124	150	27.5	180	125	255	225	365	270	220	220	124	150	27.5	196	196
FFB-1500	1208	890	584	254	160	376	290	170	170	200	375	312	220	220	135	150	27.5	212	125	325	225	375	265	220	220	135	150	27.5	196	196
FFB-2000	1208	890	629	250	160	376	290	170	170	200	375	344	220	220	135	163	27.5	212	125	325	225	375	255	220	220	135	150	27.5	196	196
FFB-3000	1208	1000	730	302	160	500	290	230	230	210	390	420	295	295	155	205	27.5	212	125	325	225	375	265	220	220	135	150	27.5	—	196

All data subject to change without notice

Note: All dimensions in mm.



PERFORMANCE CHART

Performance charts are for nominal process airflow within the operating range each FFB series and assumes $w_{PI} = w_{RI}$. Please consult Bry-Air for other specific condition.

Example :-

Conditions:
 Process inlet $w_{PI} = 12\text{g/kg}$,
 Process inlet $T_{PI} = 20^\circ\text{C}$

Chart data :-

Process outlet $w_{PO} = 5\text{g/kg}$,
 Process outlet $T_{PO} = 46.5^\circ\text{C}$

All data subject to change without notice

Bry-Air®

BRY-AIR (ASIA) PVT. LTD.

www.bryair.com

Plant I & Int'l. Sales Offices
 419-420, Udyog Vihar, Phase-III, Gurgaon
 122016, INDIA
 Phone: +91-124-4184444
 Fax: +91-124-4184400
 E-mail: bryairplant@pahwa.com
 Web.: www.bryair.com

Corporate Office & Plant II
 21C, Sector-18, Gurgaon 122015, INDIA
 Phone: +91-124-4091111
 Fax: +91-124-4091100
 E-mail: bryairmarketing@pahwa.com

Bry-Air PROKON GmbH (Europe)
 Viale A.Volta 16 Ch6830 Switzerland
 E-mail: info@pro-kon.ch
 Phone: +41 91 683 09 71

BRY-AIR (USA)
 E-mail: bryair1@bry-air.com
BRY-AIR (MALAYSIA)
 Email: bryair@bryair.com.my
BRY-AIR (CHINA)
 E-mail: info@bryair.com.cn
BRY-AIR (BRAZIL)
 E-mail: contato@bryair.com.br

To know more:
 Contact: +91 8130237917
 Email: bryairmarketing@pahwa.com

TECHNICAL DATA SHEET

Bulletin: BAA : D0004_14
 Effective: April, 02, 2016
 Supersedes: BAA:D0004_13
 Dated: Jan, 01, 2015